

# POMI

## Hoof trimming crush Std 1



- Hoof trimming crush for cows of any size**
- Variable length**
- Mechanical front-leg restraint**
- Highly efficient**
- Ergonomically correct tool**

## Mobile Hoof trimming crush.

This hoof-trimming crush is suitable for any size of cow. It can be adjusted lengthwise. The headgate opens to the sides and only closes to fit the neck size of the cow in the crush.

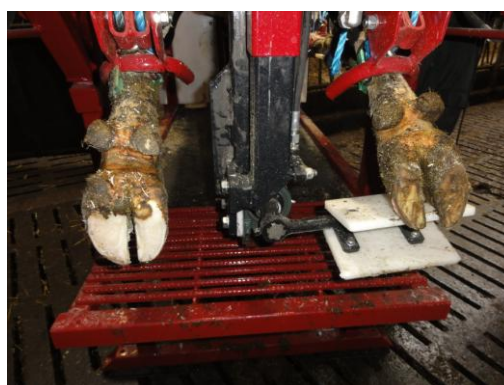
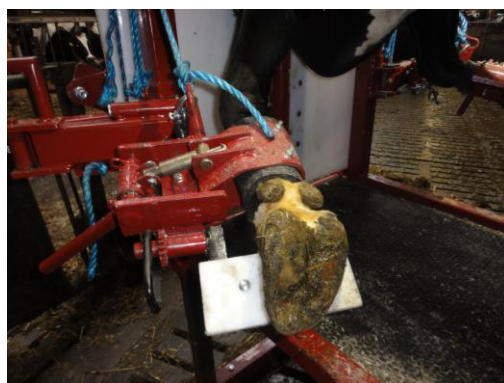
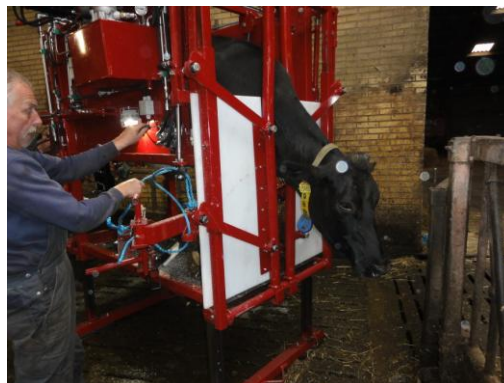
A good way of making the cows pass through the crush is to have the incoming cow follow right behind the outgoing one. Here it is important that the headgate slides to the sides. When the headgate opens, it is ready to receive the next cow. Hydraulic system with tuned 4 W motor and 18 cm<sup>3</sup> pump. The crush has 400 V input, 400 V output; 1 or 2 x 230 V yoke. The crush narrows to 700 mm in the centre as the beasts become more calm when room at the sides and front gates is minimized.

The new type of front-leg restraint, which swivels mechanically catching hold of the cow's leg, is supplied with a manual or hydraulic front-leg lock. The system is pulled into position by a cylinder fitted with a rope that also keeps the front-leg restraint locked. The advantage of this system is that the trimmer does not risk being kicked while working below the cow to fit a sleeve; here he can work in upright position throughout the process. The position of the leg can be adjusted sideways and heightwise. This depends on whether both legs are lifted or you work on one leg at a time.

The hind leg restraint is flexible featuring a double fitting for better fixation of the legs. This spares the beast's joints and leaves no marks. The length of the tailgate is hydraulically variable to ensure uniform positioning of the hind legs no matter which position they are in. The hind legs are retracted by means of cylinders and ropes on plastic rollers. Hoof supports feature a heavy-duty multi-spline shaft, rack-and-pinion and cylinder for minimum maintenance.

Optional hydraulic drive wheel. Available as an optional.

Length, total	3000 mm
Width, total	1300 mm
Height, total	2050 mm
Weight, total	1000 kg



## POMI Industri ApS

Abildvadvej 5, Thorup • DK-9610 Nørager  
Tlf. +45 9855 2000 • Fax +45 9855 2200

[www.pomi.dk](http://www.pomi.dk)

Dealer: