

POMI

Refuse collection vehicle Renovo 6m³, 8m³ og 10m³



Compractor



Tailgate and top hatches are hydraulic



Unloading height as desired



Refuse collection vehicle supplied in 8 m³ as a standard. Also available as 6 or 10 m³, if requested.

The refuse collection vehicle is used for decentralized collection of waste from containers, with compression, as is emptying straight into the main container.

- Compactor
- Hydraulic brakes
- Tailgate and top hatches are hydraulic.



Optionals

- Lift, special (from cellar shaft)
- Offsetting of lift 100 cm

Technical data

	6m ³	8m ³	10m ³
Working loads depending on equipment	4900 - 5300 kg	4600 - 5000 kg	4300 - 4700 kg
Box dimensions length	4,00 meter	4,00 meter	4,00 meter
Box dimensions width	1,80 meter	1,80 meter	1,80 meter
Box dimensions height	0,95 meter	1,25 meter	1,55 meter
Total width	2,10 meter	2,10 meter	2,10 meter
Unloading height	as desired	as desired	as desired
Unladen weight	approx 2860 kg	approx 3160 kg	approx 3480 kg
Lift, from ground level	approx 600 kg	approx 600 kg	approx 600 kg
Hitch pressure max.	2800 kg	2800 kg	2800 kg
Wheels and tyres	14 x 16 - 14 ply	14 x 16 - 14 fly	14 x 16 - 14 fly

POMI Industri ApS

Abildvadvej 5, Thorup
DK-9610 Nørager

Phone +45 98 55 20 00 Fax +45 98 55 22 00
www.pomi.dk Mail: pomi@pomi.dk

Dealer

Refuse collection vehicle



Control box.



Compactor.



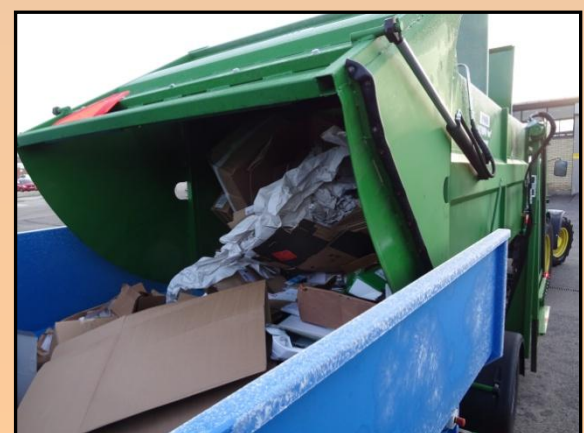
Unloading height as desired.



Unloading of waste.



Unloading of cardboard.



Unloading of cardboard.

Optionals for refuse collection vehicle



Offsetting of lift 100 cm



Offsetting of lift 100cm



Lift long, from cellar shaft.



Lift long, from cellar shaft.

POMI Industri ApS

Abildvadvej 5, Thorup

DK-9610 Nørager

Phone +45 98 55 20 00 Fax +45 98 55 22 00

www.pomi.dk

Mail: pomi@pomi.dk

Dealer